

SANYO ELEVATORS AND ESCALATORS

**ESCALATORS
MOVING WALKS**



GOOD AT GRASP

—SAFETY SYSTEM

Only are we careful and considerate, can we then produce the peaceful products. Regarding the safety world, SANYO ELEVATORS AND ESCALATORS always abides by the principle that integrates "strict and standard" into one. It endeavors to design, research into and develop the originally safe, concise and graceful products.

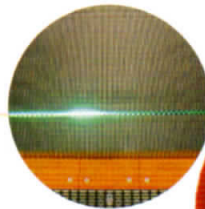
Skirt panel brush

It is a optional safety device. The brush that has been installed between the skirt panel and the step will prevent the shoes of passengers from touching the skirt panel.



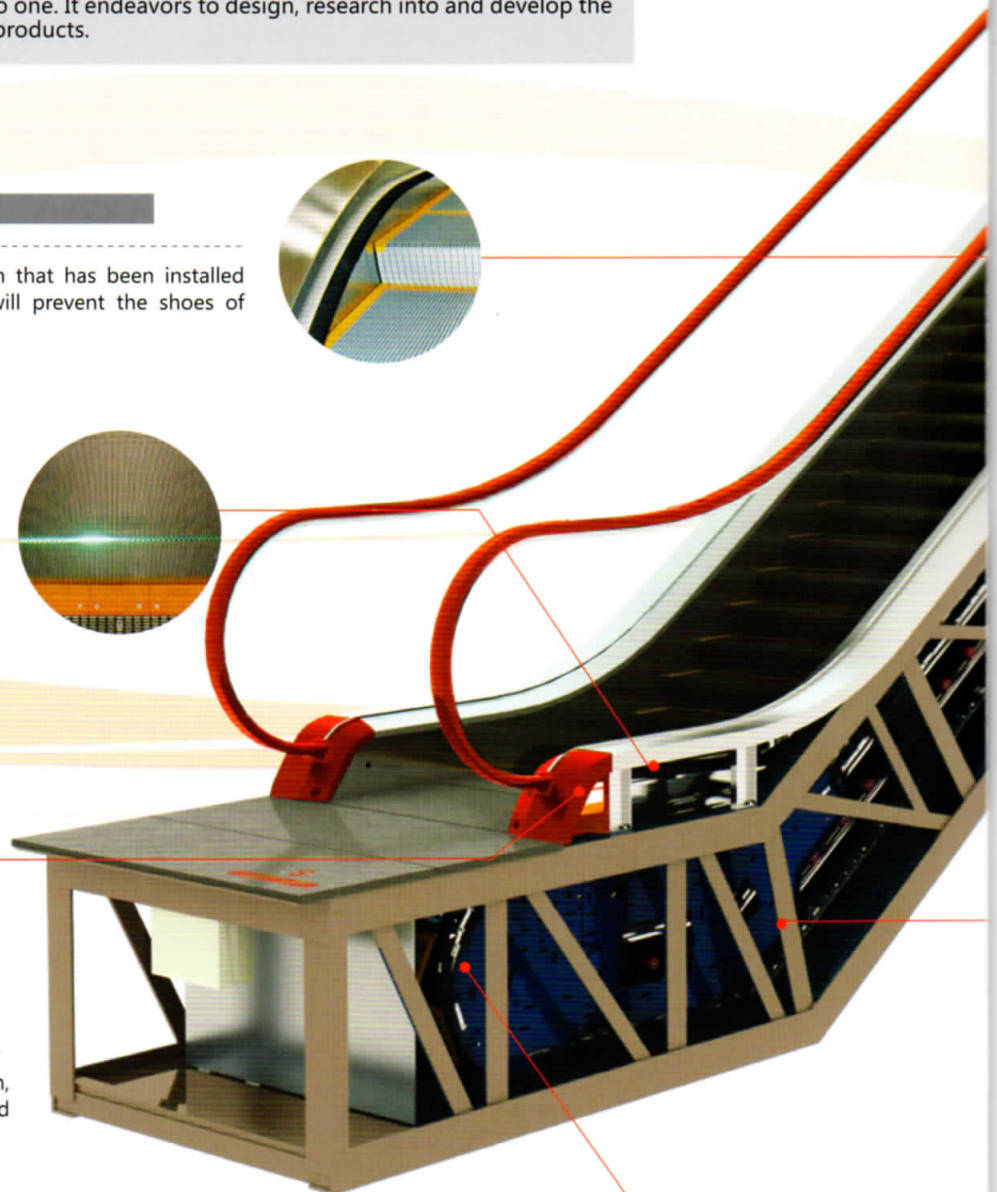
Step illumination

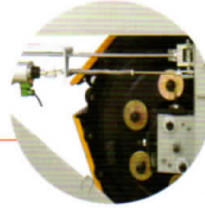
Illumination exists in the upper and lower ends of the escalator, in the lower part of the step in order to remind the passengers of the security matters.



Emergency stop button

When the button has been pressed down, the escalator (moving walk) will be stopped for running.





Emergency brake device

When the electric force falls short of supply or it acts any of the safety device, the brake function goes into effect by the safety device through the spring resilience action, the escalator (moving walk) stopped for running accordingly.



Drive-chain breaking protection

When the drive-chain has been over-stretched or it is broken, the escalator (moving walk) will automatically stop for running.



Step (tread) sunk protection device

When there is abnormal step bending, the escalator (moving walk) will be stopped for running before the step entering into the comb plate.



Step speed detector

When the handrail speed versus step is slower than certain percentage, the escalator (moving walk) will be stopped for running.

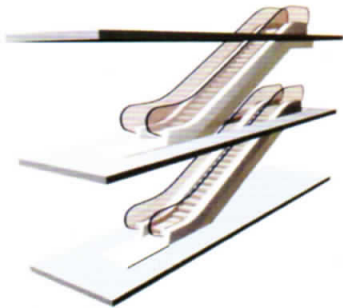


Step-chain breaking protector

When the drive-chain has been over-stretched or it is broken, the escalator (moving walk) will be automatically stopped for running.

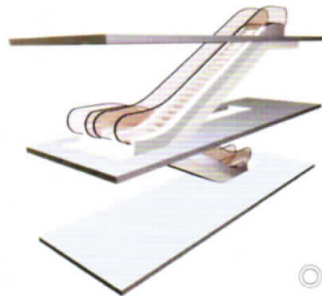


Feasible Design Plan



◎ Single

Such layout has the advantages of small covering area, flexible escalator arrangement. It can only fulfill one-way intermittent flow of the passengers. It is mostly suitable for small-size shopping places.



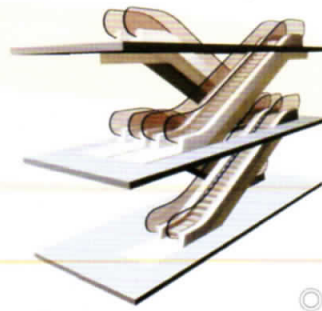
◎ Scissored

Such layout is a bit larger than that from the irregular layout. It can fulfill one-way continuous flow of the passengers. It is mostly suitable for small and medium department stores.



◎ Parallel

Such layout is mainly fit for large passenger flow shopping centers and public traffic areas. It can fulfill two-way continuous flow of large passenger flows. When one-way peak hour occurs in the passenger flow, we can adjust the travel direction of partial escalators in order to satisfy rush-hour flow according to the passenger flow requirements. Without an internal baffle, such mode is quite economical.



◎ Criss-cross

Such layout is mainly suitable for large-size department stores and public constructions. The conveying times between these floors shall be minimized as far as possible.



Single



Scissored



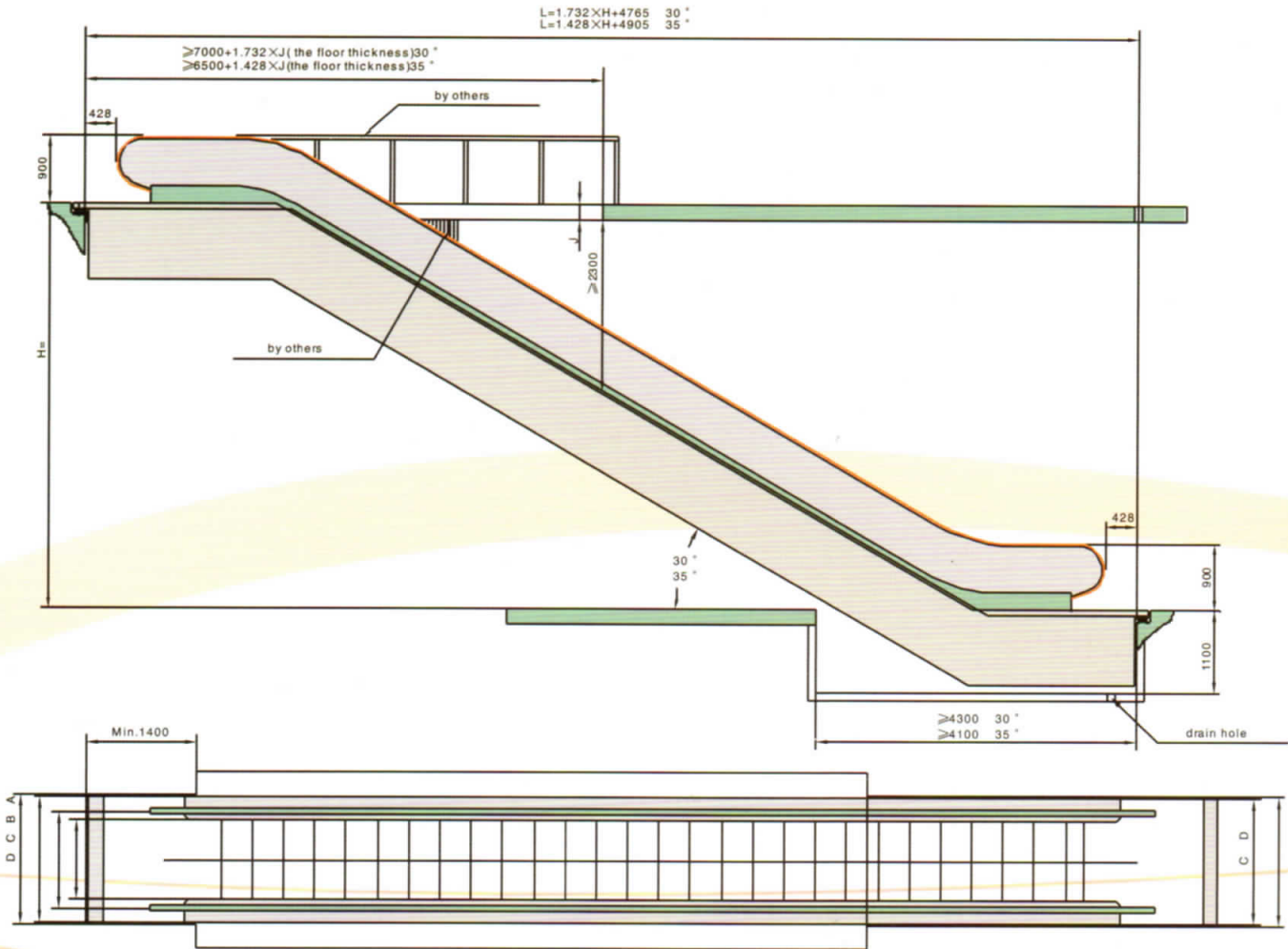
Parallel



Criss-cross



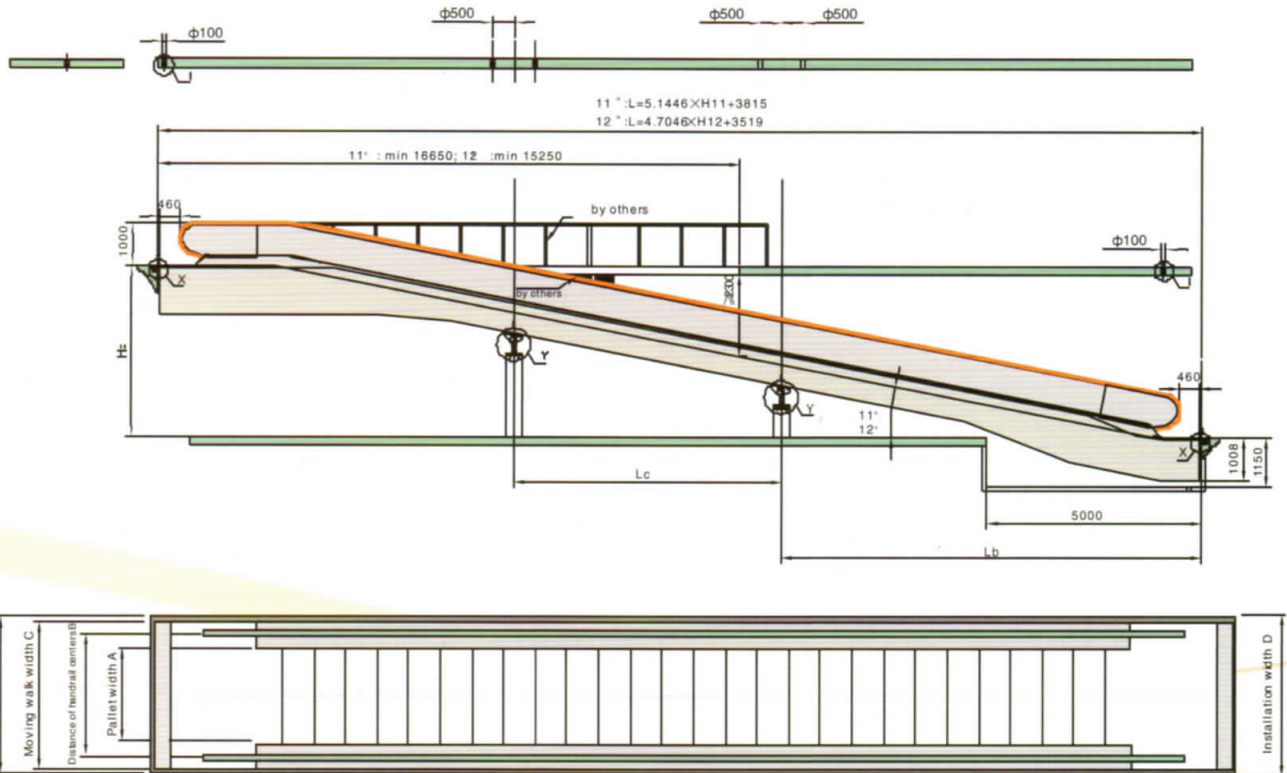
Escalator Construction Parameter



The schematic drawing of civil work is for reference only

Model	Traveling height	Rated speed	Rated load capacity	Inclination	Flat step num	Motor power	A(mm)	B(mm)	C(mm)	D(mm)
EF30A-60	3000≤H≤6000	0.5	3600	30	2	5.5	600	838	1200	≥1260
EF30A-80	3000≤H≤4000	0.5	4800	30	2	5.5	800	1038	1400	≥1460
	7.5									
EF30A-100	3000≤H≤4700	0.5	6000	30	2	7.5	1000	1238	1600	≥1660
	4700≤H≤6000					11				
EF35A-60	3000≤H≤6000	0.5	3600	35	2	5.5	600	838	1200	≥1260
EF35A-80	3000≤H≤4700	0.5	4800	35	2	5.5	800	1038	1400	≥1460
	4700≤H≤6000					7.5				
EF35A-100	3000≤H≤3800	0.5	6000	35	2	5.5	1000	1238	1600	≥1660
	3900≤H≤5000					7.5				
	5000≤H≤6000	0.5	6000	35	2	11	1000	1238	1600	≥1660

Moving Walk Construction Parameter



The schematic drawing of civil work is for reference only

Model	Traveling length	Rated speed	Rated load capacity	Inclination	Motor power	A(mm)	B(mm)	C(mm)	D(mm)
ER-80/12°	2500≤H≤4500	0.5	6750	12	7.5	800	1038	1400	≥1460
	4600≤H≤6000				11				
	2500≤H≤4500	0.65	8775		11				
	4600≤H≤6000				15				
ER-100/12°	2500≤H≤3500	0.5	9000	12	7.5	1000	1238	1600	≥1660
	3600≤H≤6000				11				
	2500≤H≤3500	0.65	11700		11				
	3600≤H≤6000				15				

Exporting Office

Address: Floor 24, No.9 Wuhu Road, North Tower of Lihu
Science and Innovation Centre, Wuxi, China
Tel: +86-510-85841226 (Operator)
Fax: +86-510-85841227
E-mail: export@sanyo-eec.com
Website: www.sanyo-eec.com

Factory

Address: Nanxun Economical Development Zone,
Zhejiang Province, China